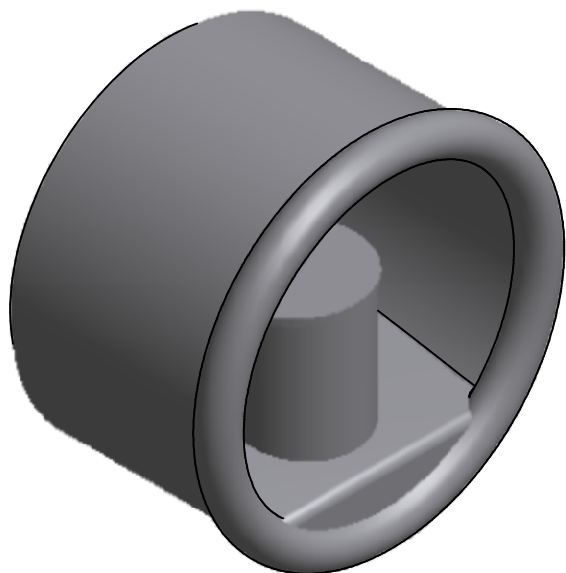
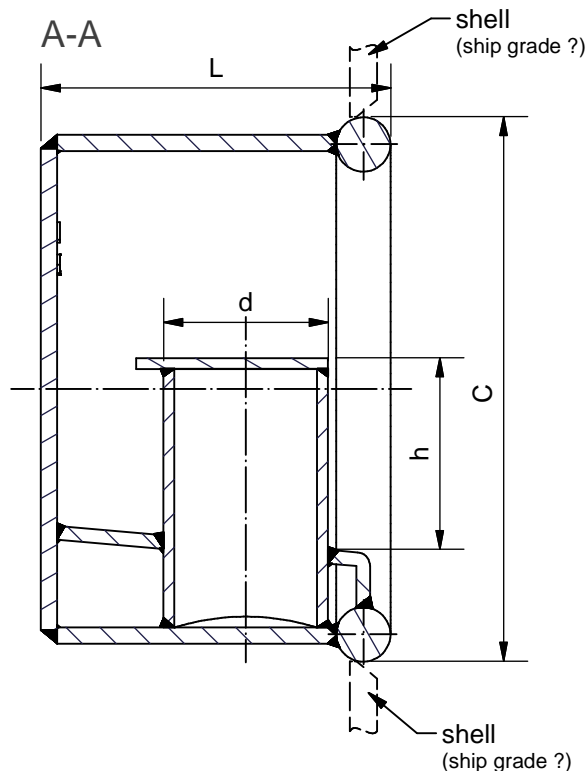
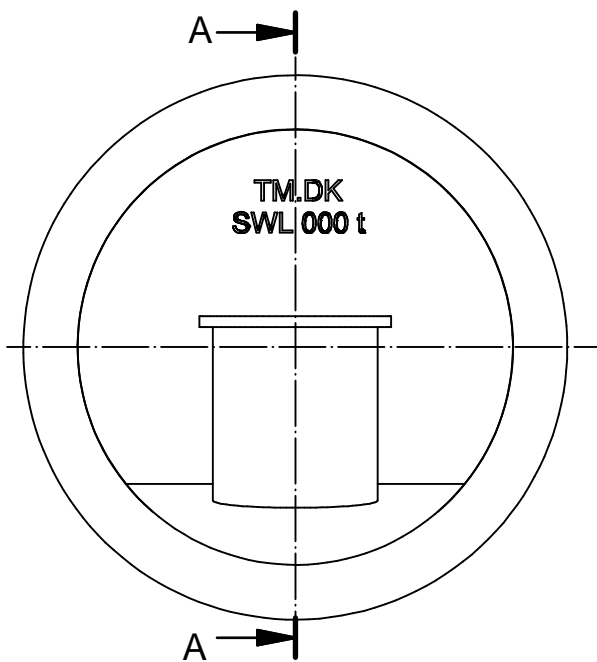


**TM 507009L Welded Recessed Bollard type II**



See reverse for details ⇒



**Material:**

Round bar S235J2 or S355J2 acc. to EN 10025:2004 or equivalent (shell ship grade to be define by yard)  
 Remaining steel: S355J2 acc. to EN 10025:2004 or equivalent

**Certificate:**

3.1 EN 10204:2004.

**Surface treatment:**

Surface treatment Sa 2.5 + Hempel primer ZS 15890 grey

Constructed in compliance with IMO Guidance, MSC/Circ.1175 of 24 May 2005 and IACS UR A2 (Rev.3).

Design load 1.25 x SWL

Allowable stresses 100/60 % of min yield point

**Order:** TM 507009L-Type II-DN, ship grade, example: TM507009L-Type II-DN 5, ship grade AH36

Suitable strengthening at deck/shell bulwark by the yard

Supporting hull structure and reinforcement beneath to be arranged by the yard to the satisfaction by the classification society.

Recessed Bollards type II					
DN	SWL (kN)	Measurements - mm			
		d	C	L	h
5	49	101.6	434	282	175
10	98	114.3	434	282	175
15	147	114.3	483	294	195
20	196	139.7	483	314	195
30-35	343	193.7	536	415	215
50 *	490	273	837	546	365
64 **	628	273	837	552	365
90 ***	883	323.9	930	635	400
125	1226	355.6	1028	718	450
150	1471	406.4	1028	830	460

\*) Comply with the Panama canal 2004 regulations for accompanying bitt for single chock load of 45,36 t (445 kN).

\*\*) Comply with the Panama canal 2004 regulations for accompanying heavy bitt for double chock load of 64 t (628 kN).

\*\*\*) Comply with the Panama canal 2014 regulations Panamax Plus and New Panamax for accompanying heavy bitt for double chock load of 90 t (883 kN).

**STANDARD**

**Tech-Marine Equipment ApS**

Esrumvej 421 - DK 3080 Tikøb  
 Phone +45 4970 4395, www.Tech-Marine.dk

Existing law protects TMs rights of possession to this drawing. The design or the drawing must not, without permission of TM be published, copied, reproduced, manufactured or exploited in any other way.

**TM 507009L**

**Welded Recessed Bollard type II**

Date	Checked	Revision
------	---------	----------

03-02-2017		C
------------	--	---

Sheet	2 of 2
-------	--------