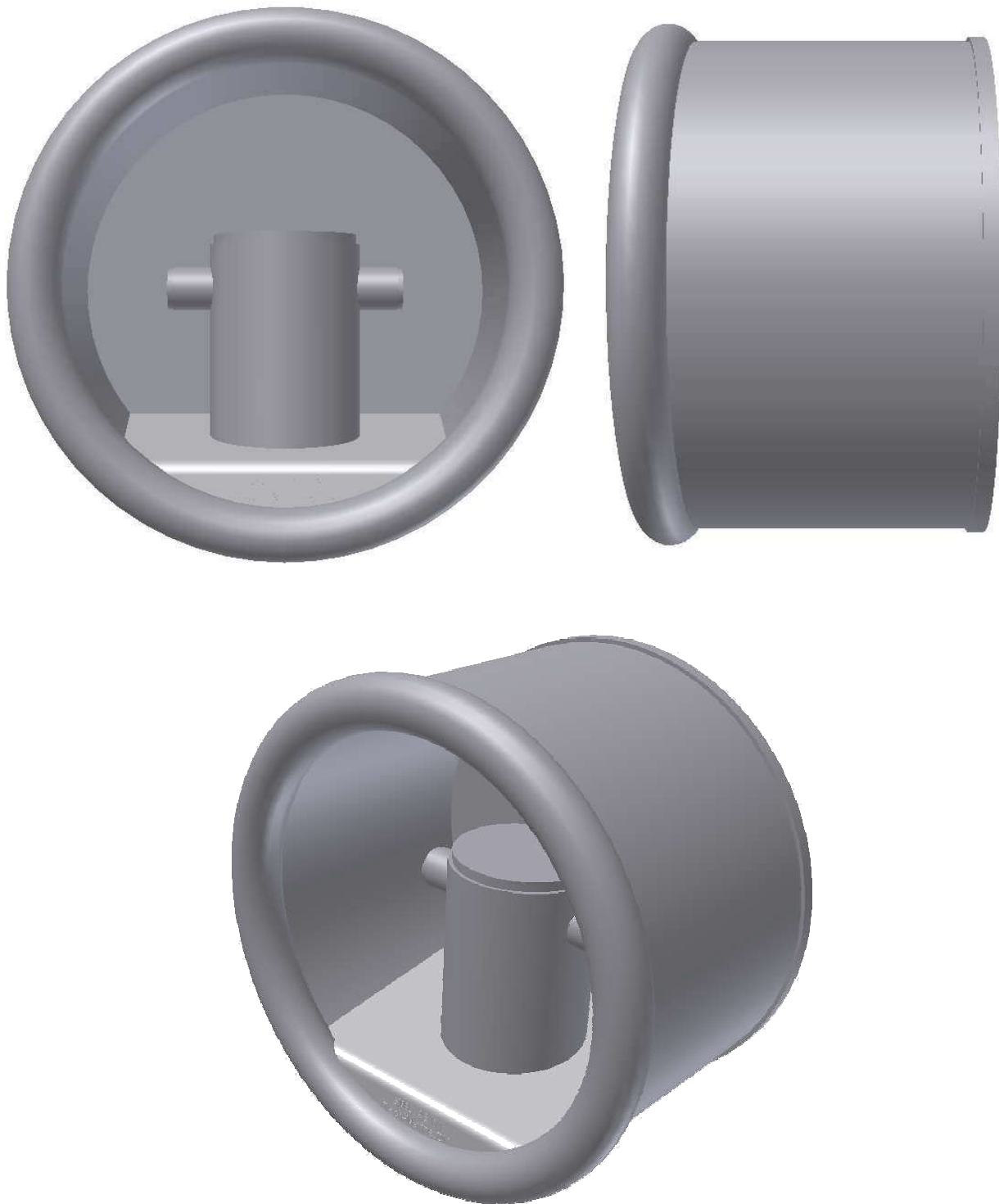
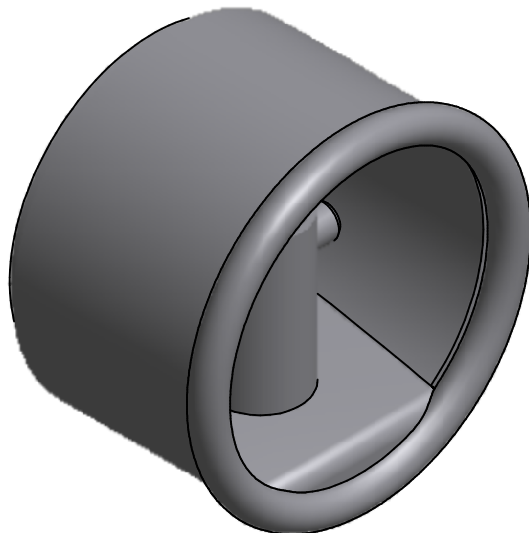
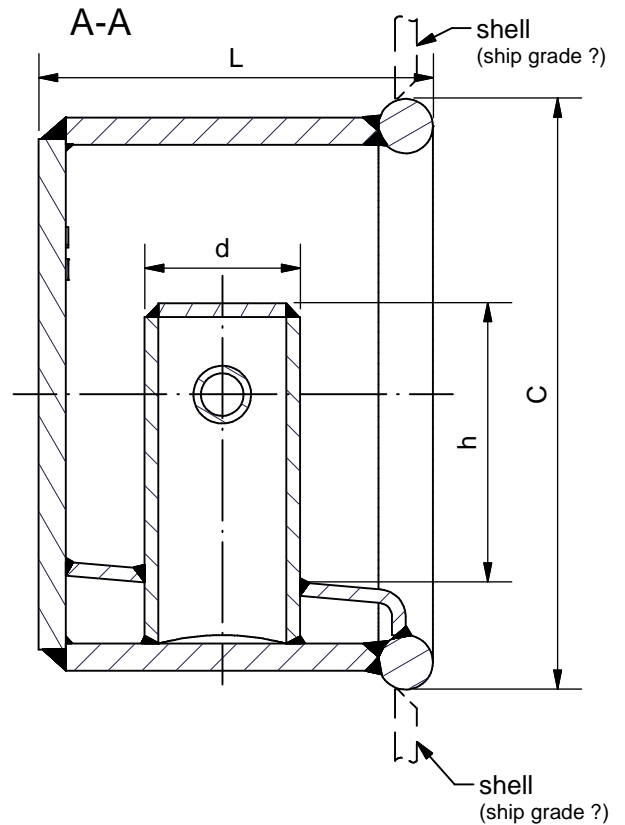
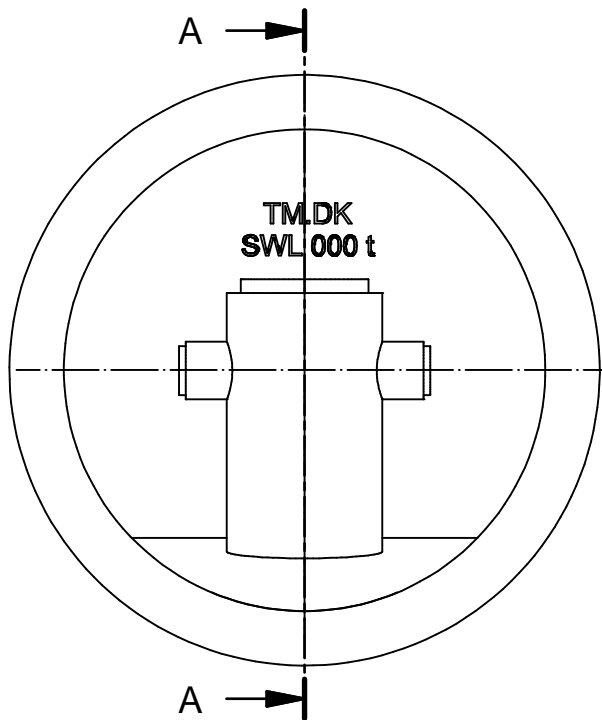


TM 507006L Welded Recessed Bollard type I



See reverse for details ⇒



Material:

Round bar: S235J2 or S355J2 acc. to EN 10025:2004 or equivalent (shell ship grade to be define by yard)
 Remaining steel: S355J2 acc. to EN 10025:2004 or equivalent

Certificate:

3.1 EN 10204:2004.

Surface treatment:

Sa 2.5 + Hempel primer ZS 15890 grey

Constructed in compliance with IMO Guidance, MSC/Circ.1175 of 24 May 2005 and IACS UR A2 (Rev.3).

Design load 1.25 x SWL

Allowable stresses 100/60 % of min yield point

Order: TM 507006L-Type I-DN, ship grade, *example: TM507006L-Type I-DN 5, ship grade AH36*

Suitable strengthening at deck/shell bulwark by the yard.

Supporting hull structure and reinforcement beneath to be arranged by the yard to the satisfaction by the classification society.

Recessed Bollards

DN	SWL (kN)	Measurements - mm			
		d	C	L	h
5	49	101.6	434	282	203
10	98	114.3	434	282	203
15	147	114.3	483	294	235
20	196	139.7	483	314	226
50 *	490	273	837	546	427
64 **	628	273	837	552	407
90 ***	883	323.9	930	635	440
125	1226	355.6	1028	718	490
150	1471	406.4	1028	830	460

*) Comply with the Panama canal 2004 regulations for accompanying bitt for single chock load of 45,36 t (445 kN).

**) Comply with the Panama canal 2004 regulations for accompanying heavy bitt for double chock load of 64 t (628 kN).

***) Comply with the Panama canal 2014 regulations Panamax Plus and New Panamax for accompanying heavy bitt for double chock load of 90 t (883 kN).

STANDARD

Tech-Marine Equipment ApS

Esrumvej 421 - DK 3080 Tikøb
 Phone +45 4970 4395, www.Tech-Marine.dk

Existing law protects TMs rights of possession to this drawing. The design or the drawing must not, without permission of TM be published, copied, reproduced, manufactured or exploited in any other way.

TM 507006L

Welded Recessed Bollard type I

Date	Checked	Revision
------	---------	----------

03-02-2017		I
------------	--	---

Sheet	2 of 2
-------	--------