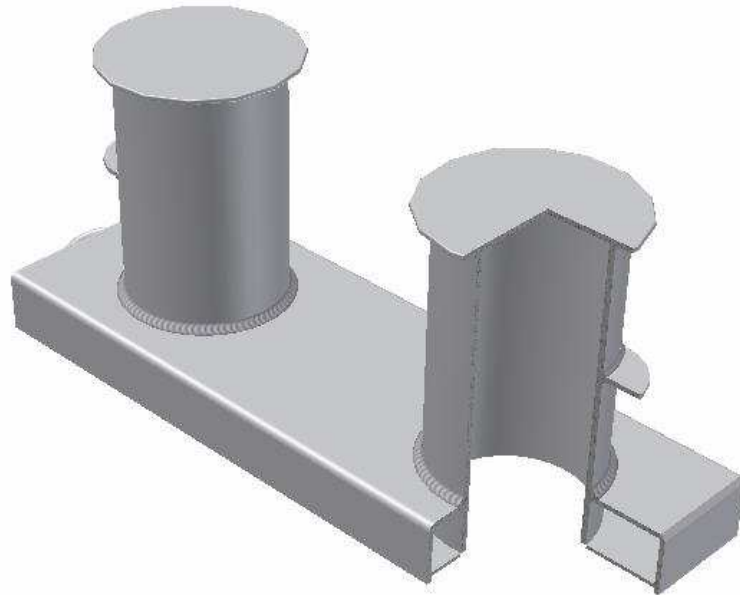
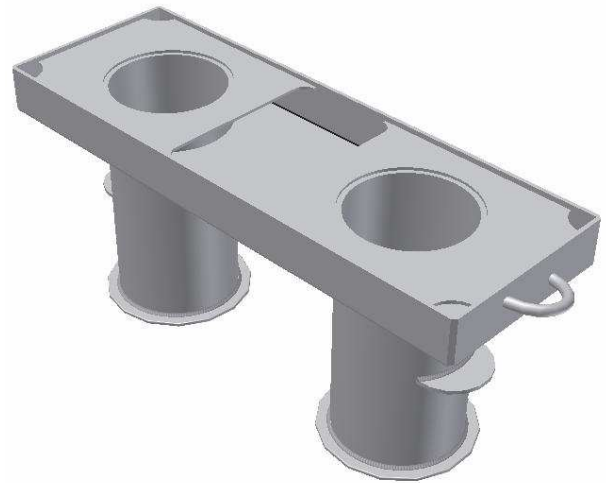
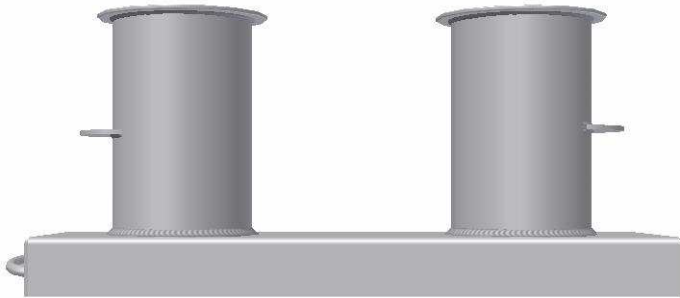


TM 505001L Double Bollard ISO shape

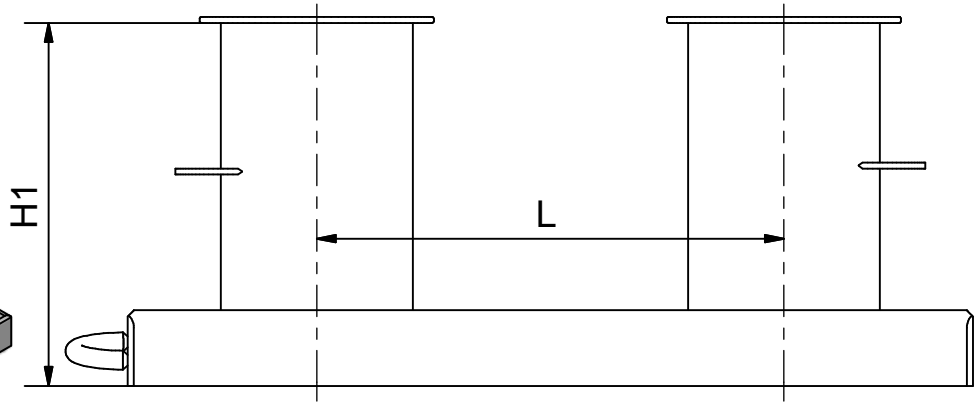
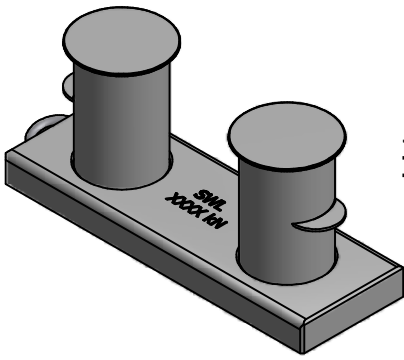


SECTION VIEW

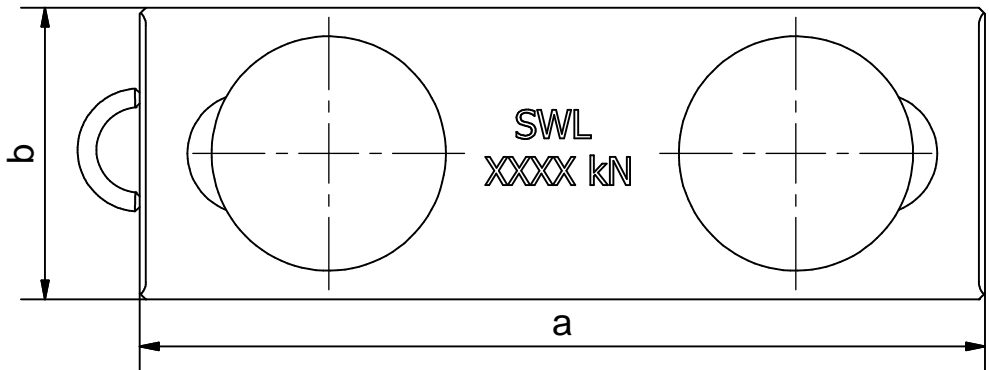
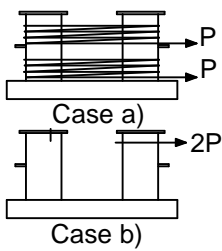
See reverse for details ⇒

TECH-MARINE EQUIPMENT APS
ESRUMVEJ 421 • 3080 TIKØB • DENMARK

E-mail: Tech-Marine@Tech-Marine.dk • www.tech-marine.dk
Phone +45 4970 4395 • Fax + 45 4970 1769 • CVR 25 99 96 49



Loading:



Case a): The bollard is designed to withstand the loading imposed by two mooring ropes each breaking load P, wound in figure-of-eight fashion (about five turns per bitt).

NOTE - in normal mooring practice only one mooring rope is fitted per bollard.

Case b): The bollard is designed to withstand the loading imposed by a single rope (using a soft loop) having a breaking load of 2 P mounted at maximum distance of 1.2 DN above the base plate

Breaking load:
 $P = 1.25 \times \text{SWL}$
 $\text{MBL} = \text{SWL}$

DN	Markings: SWL (kN)	Dimension			
		H1 (mm)	a (mm)	b (mm)	L (mm)
100	80	225	450	150	250
125	100	270	560	190	315
160	124	340	720	250	400
200	168	400	900	300	500
250	262	505	1130	380	630
315	393	630	1430	480	800
350	445*	700	1615	540	900
400	628**	775	1800	600	1000
	716				
500	798	950	2250	750	1250
	883***				
	1020				
	1155				
630	989	1165	2830	940	1570
	1350				
710	1187	1300	3190	1050	1750
800	1395	1475	3600	1200	2000

Constructed in compliance with IACS UR A2 (Rev.3)
 Allowable stresses 100/60% of min yield point

Suitable strengthening at deck/shell bulwark by the yard

Supporting hull structure and reinforcement beneath to be arranged by the yard to the satisfaction by the classification society.

Marking:
S.W.L. XXXX kN
 to be marked in welding at the top of the Base.

Material:
 S355 J2 - EN 10025 or equivalent

Certification:
 3.1 acc. to EN 10204: 2004

Surface treatment:
 SA2.5 + 25 mym Hempel's shopprimer ZS 15890, grey

Type A: Without Dividers
Type B: With Dividers

Order: TM 505001L-DN-Type
 example: TM 505001L-500 Type B

- *) Comply with the Panama canal 2004 regulations for accompanying bitt for single chock load of 45,36 t (445 kN).
- ***) Comply with the Panama canal 2004 regulations for accompanying heavy bitt for double chock load of 64 t (628 kN).
- ****) Comply with the Panama canal 2014 regulations Panamax Plus and New Panamax for accompanying heavy bitt for double chock load of 90 t (883 kN).

STANDARD

Tech-Marine Equipment ApS
 Esrumvej 421 - DK 3080 Tikøb
 Phone +45 4970 4395 Fax. +45 4970 1769

TM 505001L
Double Bollard ISO shape

Date	Checked	Revision
20-04-2017		F
Sheet	2 of 2	

Existing law protects TMs rights of possession to this drawing. The design or the drawing must not, without permission of TM be published, copied, reproduced, manufactured or exploited in any other way.