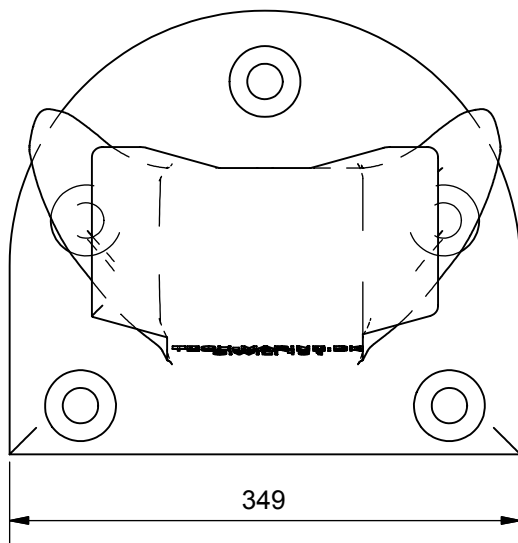
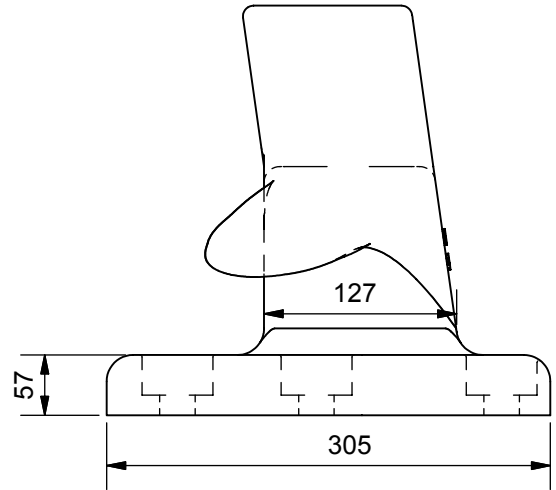
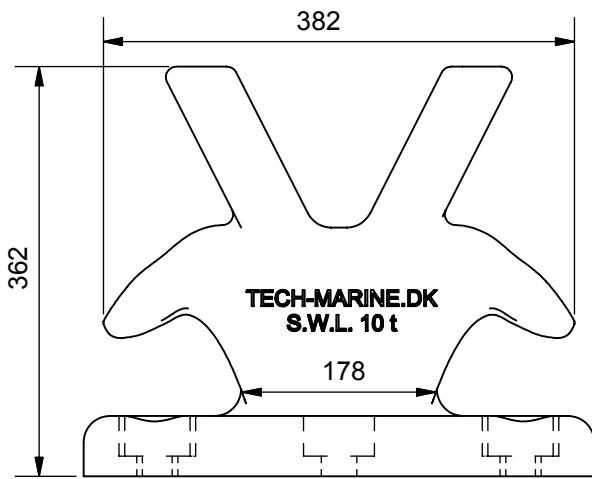


TM 518004L Twin Horn Bollard 10t



See reverse for details ⇒



Material: Cast Iron - BS/EN 1561 EN-GJL-250

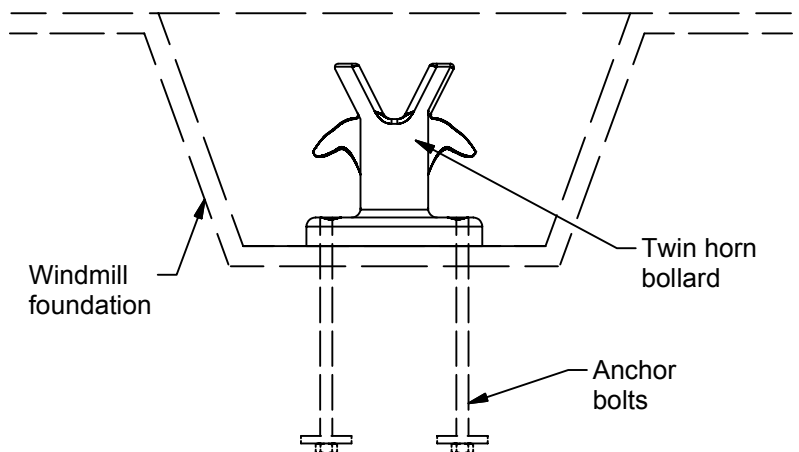
Constructed in compliance with IMO Guidance, MSC/Circ. 1175 of 24 May 2005 and IACS UR A2 (Rev.3)

MBL = 92 kN
 MBL = SWL
 Design load 1.5 x SWL
 Allowable stresses 100/60 % of min yield point.

Certification: 3.1 acc. to EN 10204:2004 or equivalent

Supporting Bolts:
 Strength of fastening bolts and casting in to be sufficient to with stand any variation in direction (laterally and vertically) of the mooring rope load.

- Position on windmill foundation -



STANDARD

Tech-Marine Equipment ApS Esrumvej 421 - DK 3080 Tikøb Phone. +45 4970 4395 Fax. +45 4970 1769 <small>Existing law protects TMs rights of possession to this drawing. The design or the drawing must not, without permission of TM be published, copied, reproduced, manufactured or exploited in any other way.</small>	TM518004L Twin Horn Bollard 10t Windmill foundation equipment	Date	Checked	Revision
		18-09-2013		
		Sheet	2 of 2	