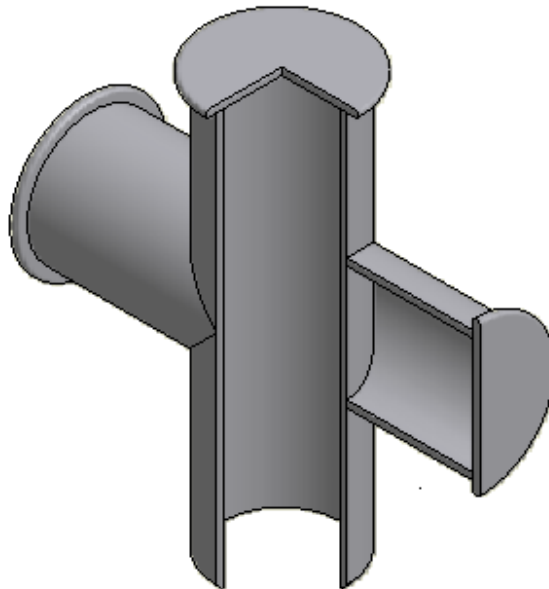
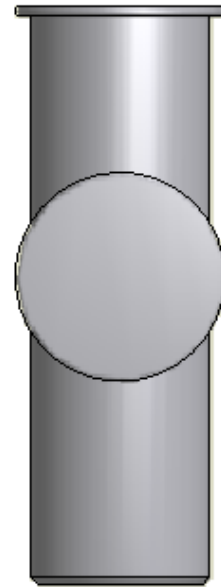
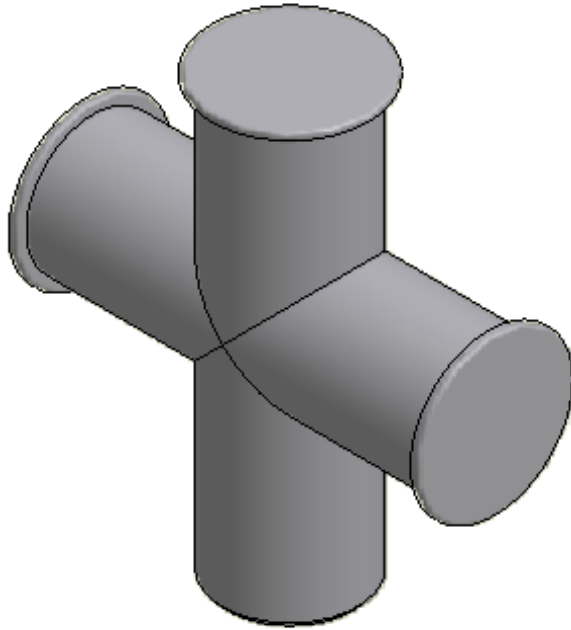
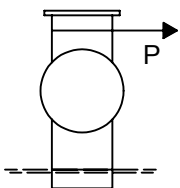
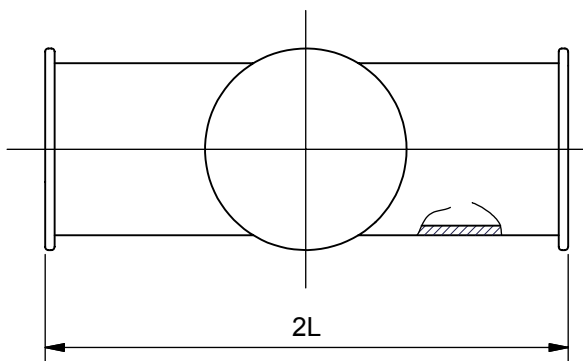
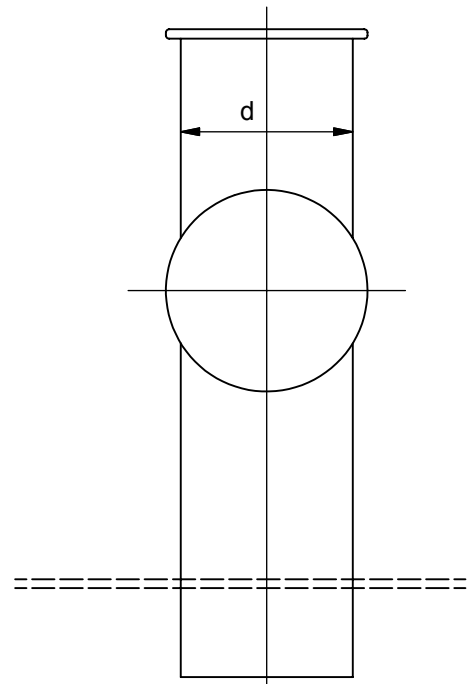
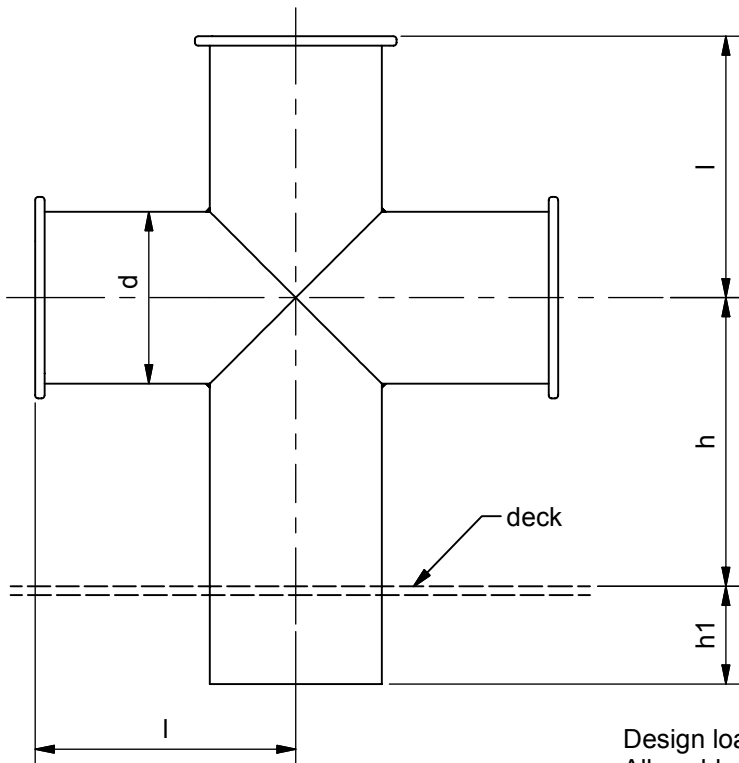


TM 505004L Single Cross Bollard



SECTION VIEW

See reverse for details ⇒



The bollard is designed to withstand the loading imposed by a single rope having a breaking load of P mounted at maximum distance above the deck.

Design load 1.25 x SWL
Allowable stresses 100/60 % of min yield

Marking:
S.W.L XX t to be marked in welding at the top plate

Material:
S355J2 - EN 10025

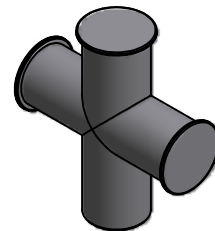
Material Certification:
3.1 acc. to EN 10204:2004

Surface treatment:
Internal: SA2.5 + Two layers 125 mym (total 250 mym) Hempel Hempadur 45143 or equivalent
External: SA2.5 + 25 mym Hempel's shopprimer ZS 15890, grey

Order: TM 505004-DN
example: TM 505004-200

Suitable support strengthening below deck by the yard.

Upon installation the strengthening should be test loaded to the specified breaking load and a test certificate issued. The test certificate should be available for inspection on board ship.



DN	max SWL (t)	Measurements - mm			
		d	h	h1	l
100	5	114.3	240	90	175
150	10	168.3	315	135	250
200	15	219.1	390	175	325
250	25	273	465	220	400

STANDARD

Tech-Marine Equipment ApS Esrumvej 421 - DK 3080 Tikøb Phone +45 4970 4395 Fax. +45 4970 1769	TM 505004L Single cross bollard	Date	Checked by	Revision:
		20-02-2014		D
		Sheet	2 of 2	

Existing law protects TMs rights of possession to this drawing. The design or the drawing must not, without permission of TM be published, copied, reproduced, manufactured or exploited in any other way.