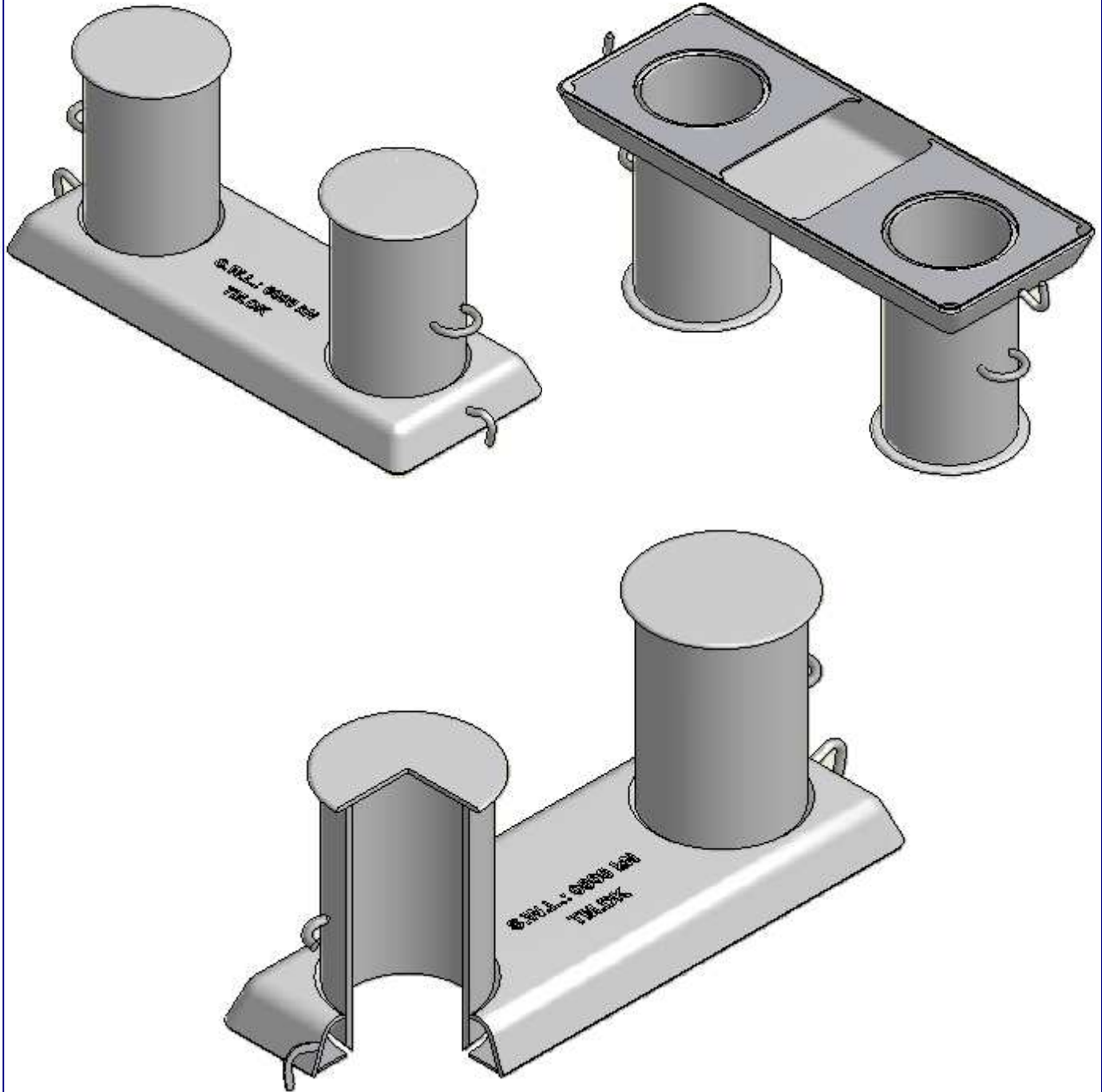


TM 505002L Double Bollard TM shape



SECTION VIEW

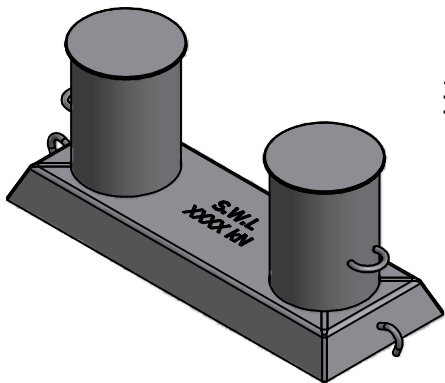
See reverse for details ⇒

TECH-MARINE EQUIPMENT APS

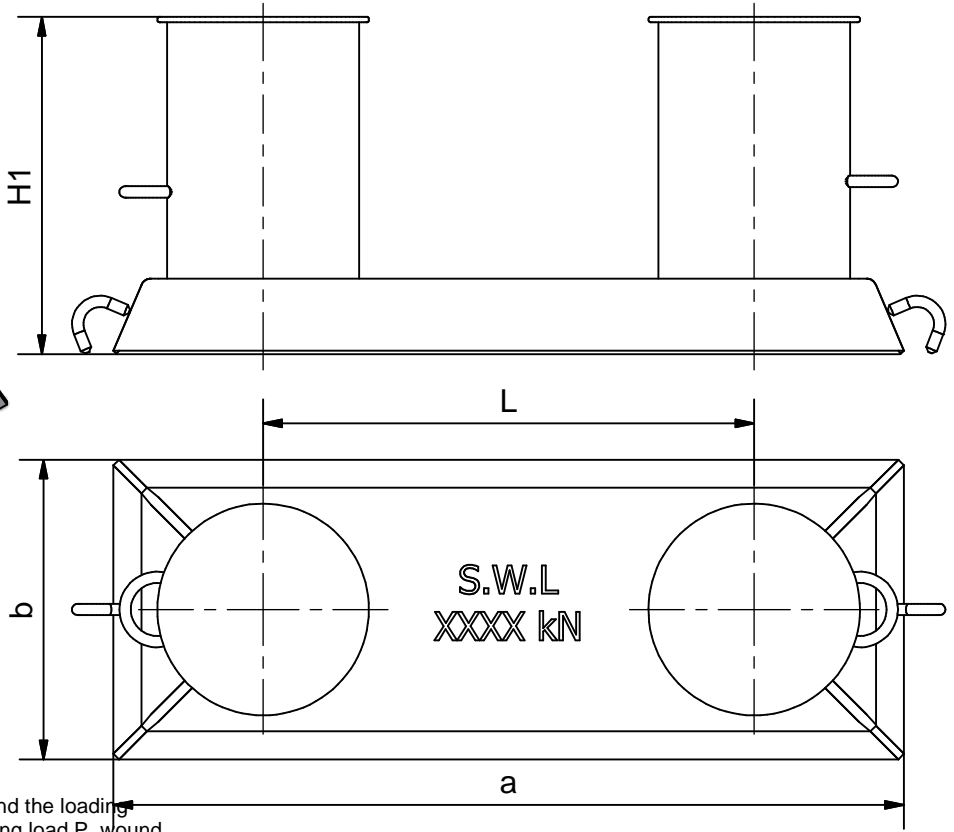
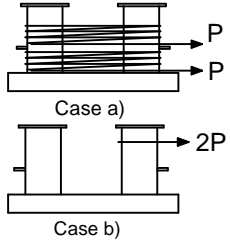
ESRUMVEJ 421 • 3080 TIKØB • DENMARK

E-mail: Tech-Marine@Tech-Marine.dk • www.Tech-Marine.dk

Phone +45 4970 4395 • Fax + 45 4970 1769 • CVR 25 99 96 49



Loading:



Case a): The bollard is designed to withstand the loading imposed by two mooring ropes each breaking load P, wound in figure-of-eight fashion (about five turns per bitt).

NOTE - in normal mooring practice only one mooring rope is fitted per bollard.

Case b): The bollard is designed to withstand the loading imposed by a single rope (using a soft loop) having a breaking load of 2 P mounted at maximum distance of 1.2 DN above the base plate

Breaking load:
 $P = 1.25 \times SWL$
 $MBL = SWL$

DN	Markings: SWL (kN)	Dimension			
		H1 (mm)	a (mm)	b (mm)	L (mm)
200	166	445	1060	410	650
250	209	537	1210	460	750
300	296	642	1450	550	900
350	445*	705	1610	610	1000
400	628**	775	1770	670	1100
	873				
	977				
500	547	908	2100	800	1300
	735				
	883***				
	977				
600	912	990	2350	900	1450
	1128				

Constructed in compliance with IACS UR A2 (Rev.3)
 Allowable stresses 100/60% of min yield point

Suitable strengthening at deck/shell bulwark by the yard

Supporting hull structure and reinforcement beneath to be arranged by the yard to the satisfaction by the classification society.

Marking:
S.W.L. XXXX kN
 to be marked in welding at the top of the Base.

Material:
 S355 J2 - EN 10025 or equivalent

Certification:
 3.1 acc. to EN 10204: 2004

Surface treatment:
 SA2.5 + 25 mym Hempel's shopprimer ZS 15890, grey

Type A: Without Dividers
Type B: With Dividers

Order: TM 505002L-TM-DN-Type
 example: TM 505002L- TM-500 Type B

*) Comply with the Panama canal 2004 regulations for accompanying bitt for single chock load of 45,36 t (445 kN).
 **) Comply with the Panama canal 2004 regulations for accompanying heavy bitt for double chock load of 64 t (628 kN).
 ***) Comply with the Panama canal 2014 regulations Panamax Plus and New Panamax for accompanying heavy bitt for double chock load of 90 t (883 kN).

STANDARD

Tech-Marine Equipment ApS Esrumvej 421 - DK 3080 Tikøb Phone +45 4970 4395 Fax. +45 4970 1769 Existing law protects TMs rights of possession to this drawing. The design or the drawing must not, without permission of TM be published, copied, reproduced, manufactured or exploited in any other way.	TM 505002L Double Bollard TM shape	Date	Checked	Revision
		22-01-2016		I
		Sheet	2 of 2	