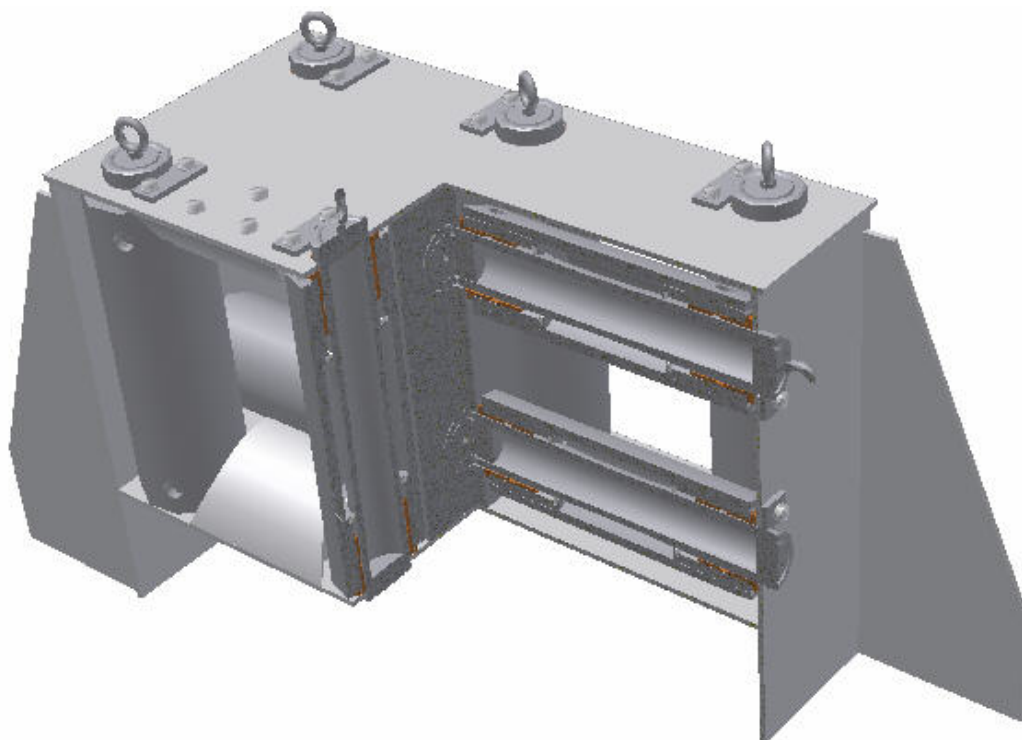
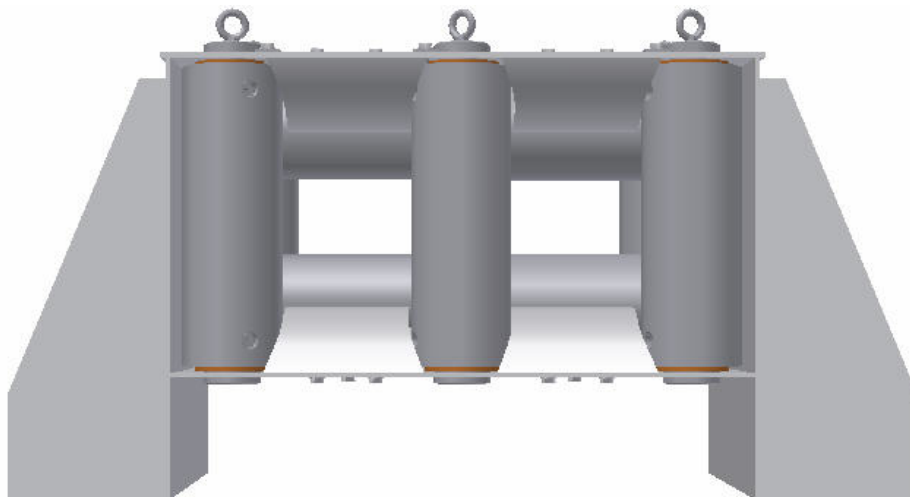


## TM 503008L 10-Roller Universal Fairlead



**SECTION VIEW**

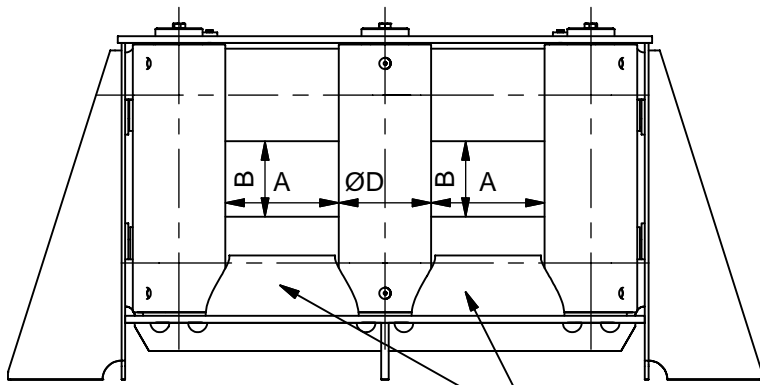
See reverse for details ⇒

**TECH-MARINE EQUIPMENT APS**

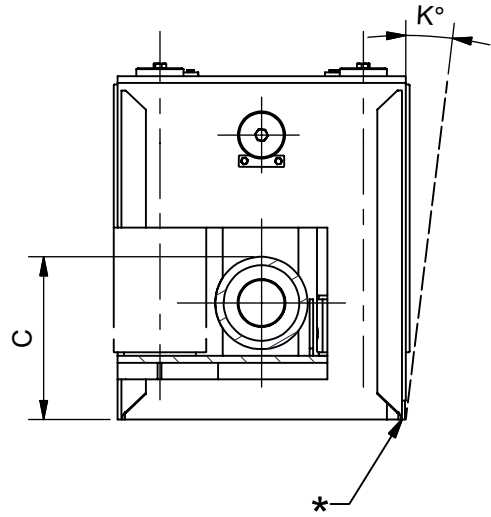
**ESRUMVEJ 421 • 3080 TIKØB • DENMARK**

E-mail: [Tech-Marine@Tech-Marine.dk](mailto:Tech-Marine@Tech-Marine.dk) • [www.tech-marine.dk](http://www.tech-marine.dk)

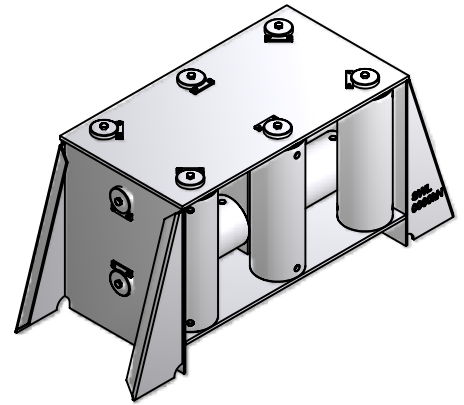
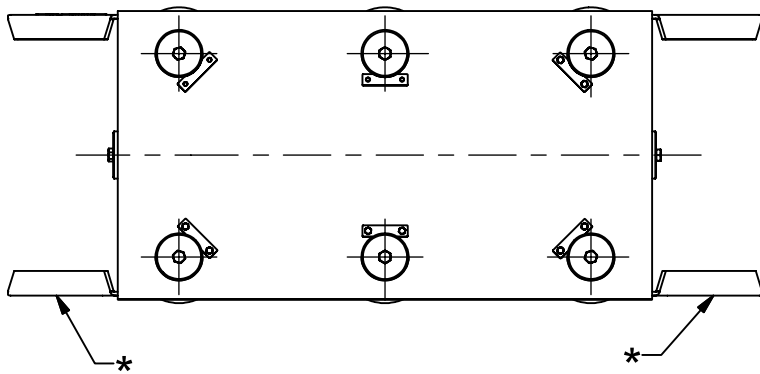
Phone +45 4970 4395 • Fax: + 45 4970 1769 • CVR 25 99 96 49



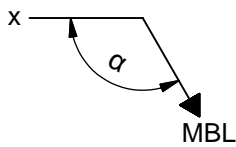
Rope Guides in top and bottom are optional



Fairleads can be delivered with waternight cover.  
See TM Standard TM 503009 and TM 503010.



General dimensions						
Type	SWL [kN]	Rope Load (MBL) kN	A	B	C min.	ØD
DN 140	370	370 <sup>1)</sup>	200	100	324	139.7
DN 194	735	735 <sup>1)</sup>	300	200	376	193.7
DN 220	977	977 <sup>1)</sup>	300	200	409	219.1
DN 245	1128	1128 <sup>1)</sup>	300	200	427	244.5



1) Winding angle (minimum angle between towlines)  
Vertical roller 90°  
Horizontal roller 120°

BA - Basic type without brackets  
DE - Deck type as shown  
BW - Bulwark type delivered without brackets marked with an \*

Dimensions C and K to be specified by the customer.

Order: TM 503008L-ØD-Type-C-K

Example: TM 503008L-194-BW-800-10

Surface treatment:  
SA2.5 + 25 my HEMPEL shopprimer ZS 15890 Grey

Shaft Material:  
316L - Stainless Steel AISI 316 L  
355J2 - Black Steel S355J2

Bearing Material:  
Bz - Bronze  
Pt - PTFE

Material:  
Certificates: 3.1 acc. to EN 10204:2004  
Tolerances: EN 13920 / 22768

Constructed in compliance with IMO Guidance On Shipboard Towing And Mooring Equipment, MSC/Circ.1175 of 24 May 2005.

Suitable strengthening at deck/shell bulwark by the yard.  
Upon installation the strengthening should be test loaded to the equivalent SWL at the specified angle and a test certificate issued.  
The test certificate should be available for inspection on board ship.

## STANDARD

<b>Tech-Marine Equipment ApS</b> Esrumvej 421 - DK 3080 Tikøb Phone: +45 4970 4395 Fax: +45 4970 1769	<b>TM 503008L</b>  <b>Universal Fairlead</b>  10-roller fairlead	Date	Checked by	Revision:
		06-03-2009		E
		Sheet	2 of 2	

Existing law protects TMs rights of possession to this drawing. The design or the drawing must not, without permission of TM be published, copied, reproduced, manufactured or exploited in any other way.