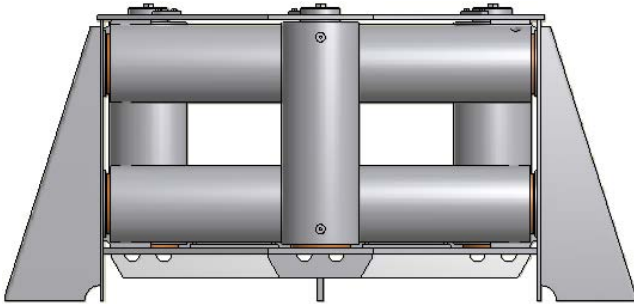
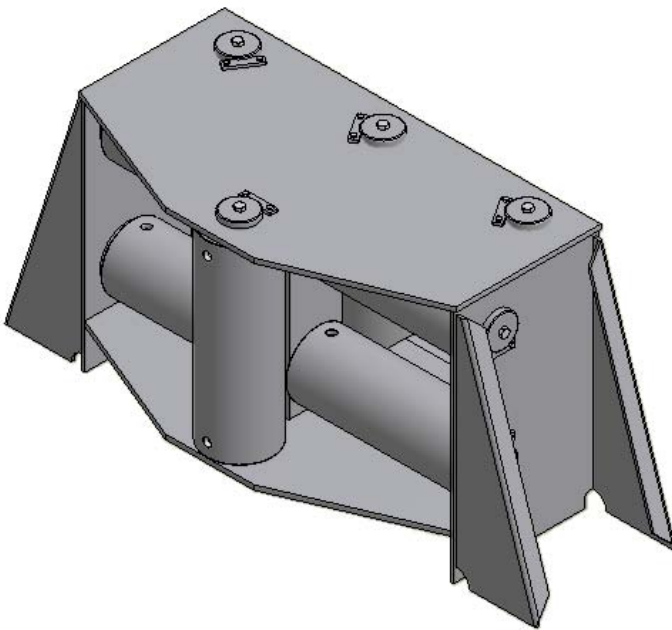
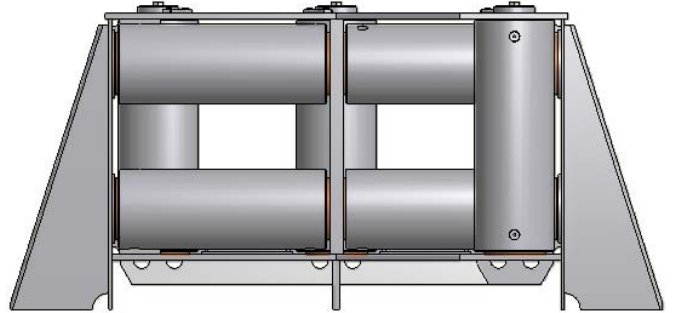


TM 503006L-S/R/L 8-Roller Fairlead (Symmetrical/Right/Left)

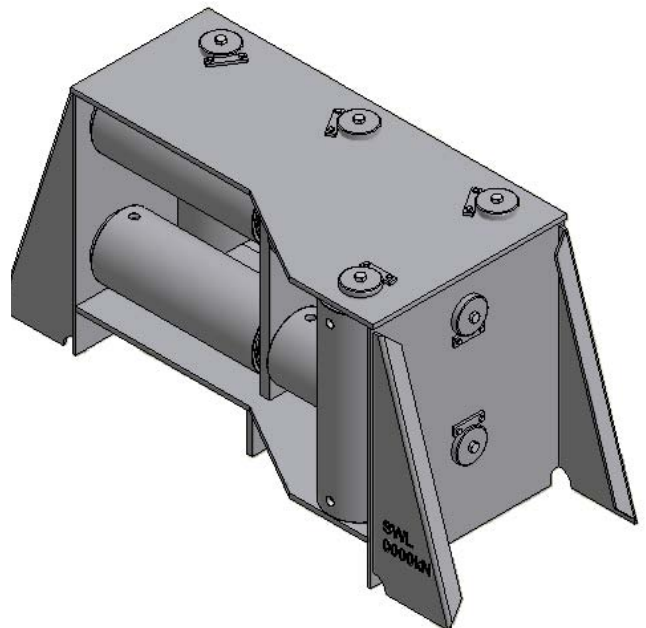
8-Roller Fairlead Symmetrical



8-Roller Fairlead Right/Left



ISOMETRIC VIEW



ISOMETRIC VIEW

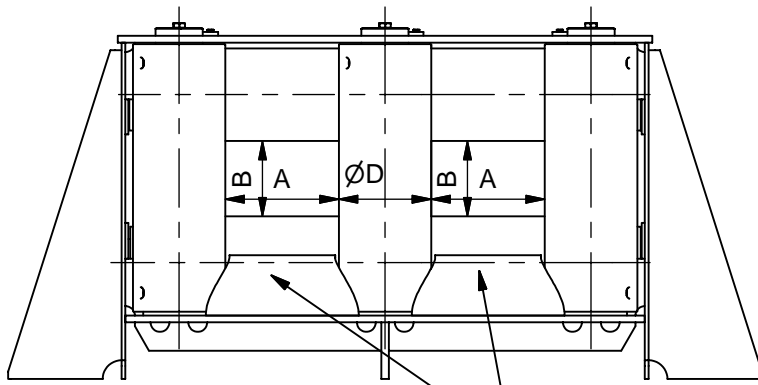
See reverse for details ⇒

TECH-MARINE EQUIPMENT APS

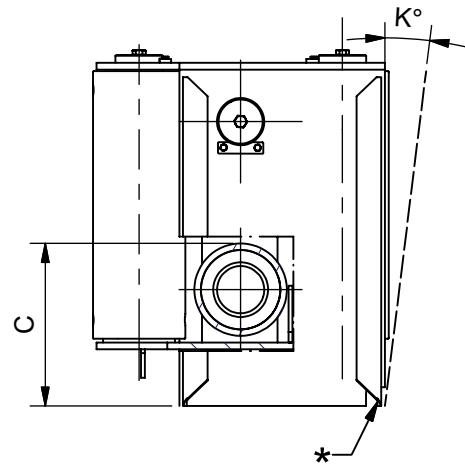
ESRUMVEJ 421 • 3080 TIKØB • DENMARK

E-mail: Tech-Marine@Tech-Marine.dk • www.tech-marine.dk

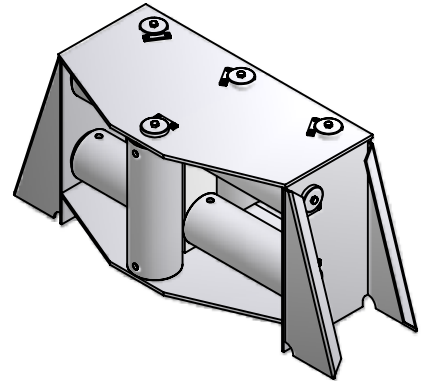
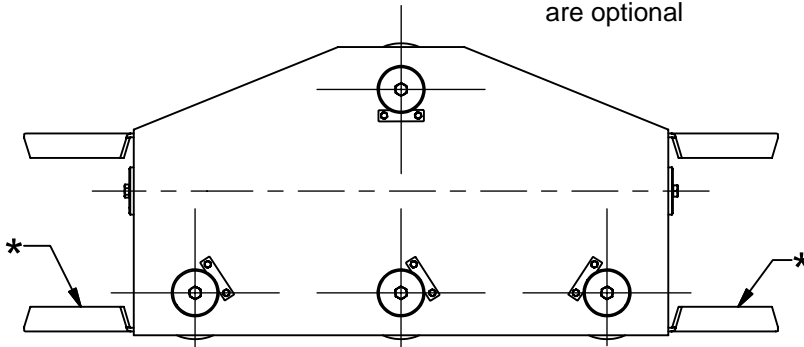
Phone +45 4970 4395 • Fax + 45 4970 1769 • CVR 25 99 96 49



Rope guides in top and bottom are optional



Fairleads can be delivered with watertight cover. See TM Standard TM 503009 and TM 503010.



General dimensions						
Type	SWL [kN]	Rope Load (MBL) kN	A	B	C min.	ØD
DN 140	370	370 ¹⁾	200	100	324	139.7
DN 194	735	735 ¹⁾	300	200	376	193.7
DN 220	977	977 ¹⁾	300	200	409	219.1
DN 245	1128	1128 ¹⁾	300	200	427	244.5

Surface treatment:
SA2.5 + 25 my HEMPEL shopprimer ZS 15890 Grey

Shaft Material:
316L - Stainless steel AISI 316L
355J2 - Black steel S355J2

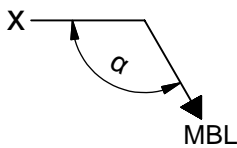
Bearing Material:
Br-Bronze
Pt-PTFE

Material:
Certificates: 3.1 acc. to EN 10204:2004
Tolerances: EN 13920 / 22768

Constructed in compliance with IMO Guidance On Shipboard Towing And Mooring Equipment, MSC/Circ.1175 of 24 May 2005.

Design load 1.25 x SWL
Allowable stresses 100/60 % of min yield point

Suitable strengthening at deck/shell bulwark by the yard.
Upon installation the strengthening should be test loaded to the equivalent SWL at the specified angle and a test certificate issued.
The test certificate should be available for inspection on board ship.



¹⁾ Winding angle (minimum angle between towlines)
Vertical roller 90°
Horizontal roller 120°

BA - Basic type without brackets
DE - Deck type as shown
BW - Bulwark type delivered without brackets marked with an *

Dimensions C and K to be specified by the customer.

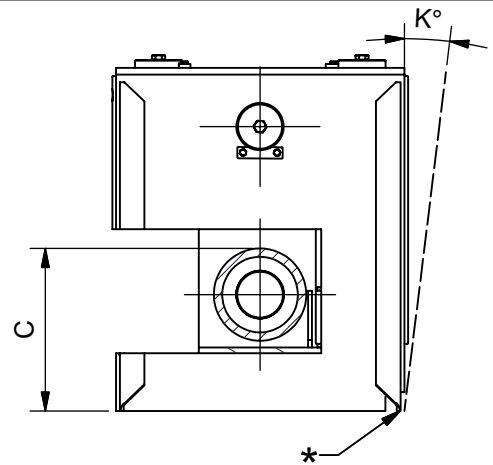
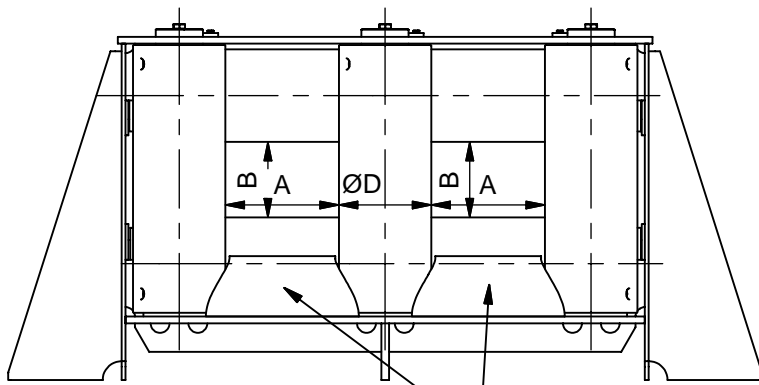
Order: TM 503006L S-ØD-Type-C-K'

Example: TM 503006L S-194-BW-800-10'

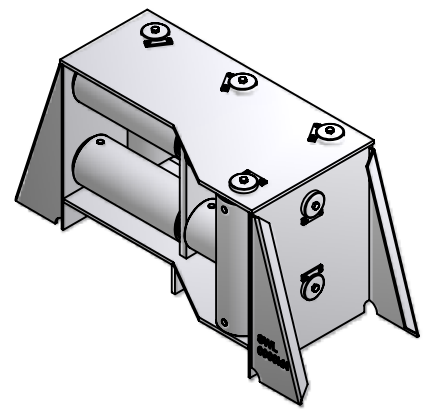
STANDARD

Tech-Marine Equipment ApS Esrumvej 421 - DK 3080 Tikøb Phone: +45 4970 4395 Fax. +45 4970 1769	TM 503006L - S Universal fairlead 8-roller fairlead Symmetrical	Date	Checked by	Revision:
		06-03-2009		E
		Sheet	2 of 3	

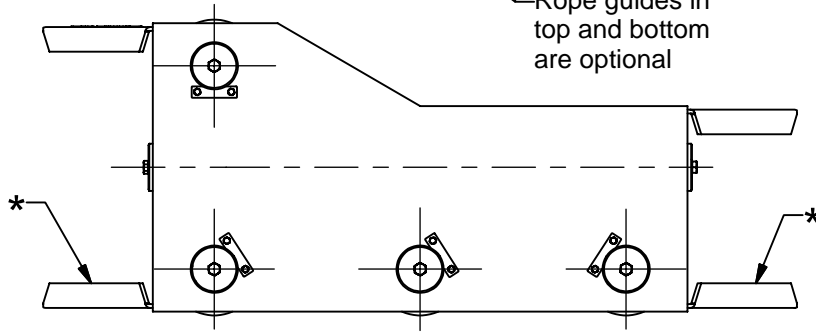
Existing law protects TMs rights of possession to this drawing. The design or the drawing must not, without permission of TM be published, copied, reproduced, manufactured or exploited in any other way.



Fairleads can be delivered with watertight cover.
See TM standard TM 503009 and 503010

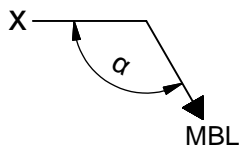


Rope guides in top and bottom are optional



General dimensions

Type	SWL [kN]	Rope Load (MBL) kN	A	B	C min.	ØD
DN 140	370	370 ¹⁾	200	100	324	139.7
DN 194	735	735 ¹⁾	300	200	376	193.7
DN 220	977	977 ¹⁾	300	200	409	219.1
DN 245	1128	1128 ¹⁾	300	200	427	244.5



Surface treatment:
SA2.5 + 25 my HEMPEL shopprimer ZS 15890 Grey

Shaft Material:
316L - Stainless steel AISI 316L
355J2 - Black steel S355J2

Bearing Material:
Br - Bronze
Pt - PTFE

Material:
Certificates: 3.1 acc. to EN 10204:2004
Tolerances: EN 13920 / 22768

Constructed in compliance with IMO Guidance On Shipboard Towing And Mooring Equipment, MSC/Circ.1175 of 24 May 2005.

Design load 1.25 x SWL
Allowable stresses 100/60 % of min yield point

Suitable strengthening at deck/shell bulwark by the yard.
Upon installation the strengthening should be test loaded to the equivalent SWL at the specified angle and a test certificate issued.
The test certificate should be available for inspection on board ship.

1) Winding angle (minimum angle between towlines)
Vertical roller 90°
Horizontal roller 120°

Orientation:

L = Vertical Roller placed in Left side (as shown)
R = Vertical Roller placed in Right side (mirrored)

Type:

BA - Basic type without brackets
DE - Deck type as shown
BW - Bulwark type delivered without brackets marked with an *

Dimensions C and K to be specified by the customer.

Order: TM 503006L R/L - ØD-Type-C-K
Example: TM 503006L R-194-BW-800-10

STANDARD

Tech-Marine Equipment ApS Esrumvej 421 - DK 3080 Tikøb Phone: +45 4970 4395 Fax. +45 4970 1769	TM 503006L - R/L Universal fairlead 8-roller fairlead Right/Left	Date	Checked by	Revision:
		06-03-2009		E
		Sheet	3 of 3	

Existing law protects TMs rights of possession to this drawing. The design or the drawing must not, without permission of TM be published, copied, reproduced, manufactured or exploited in any other way.