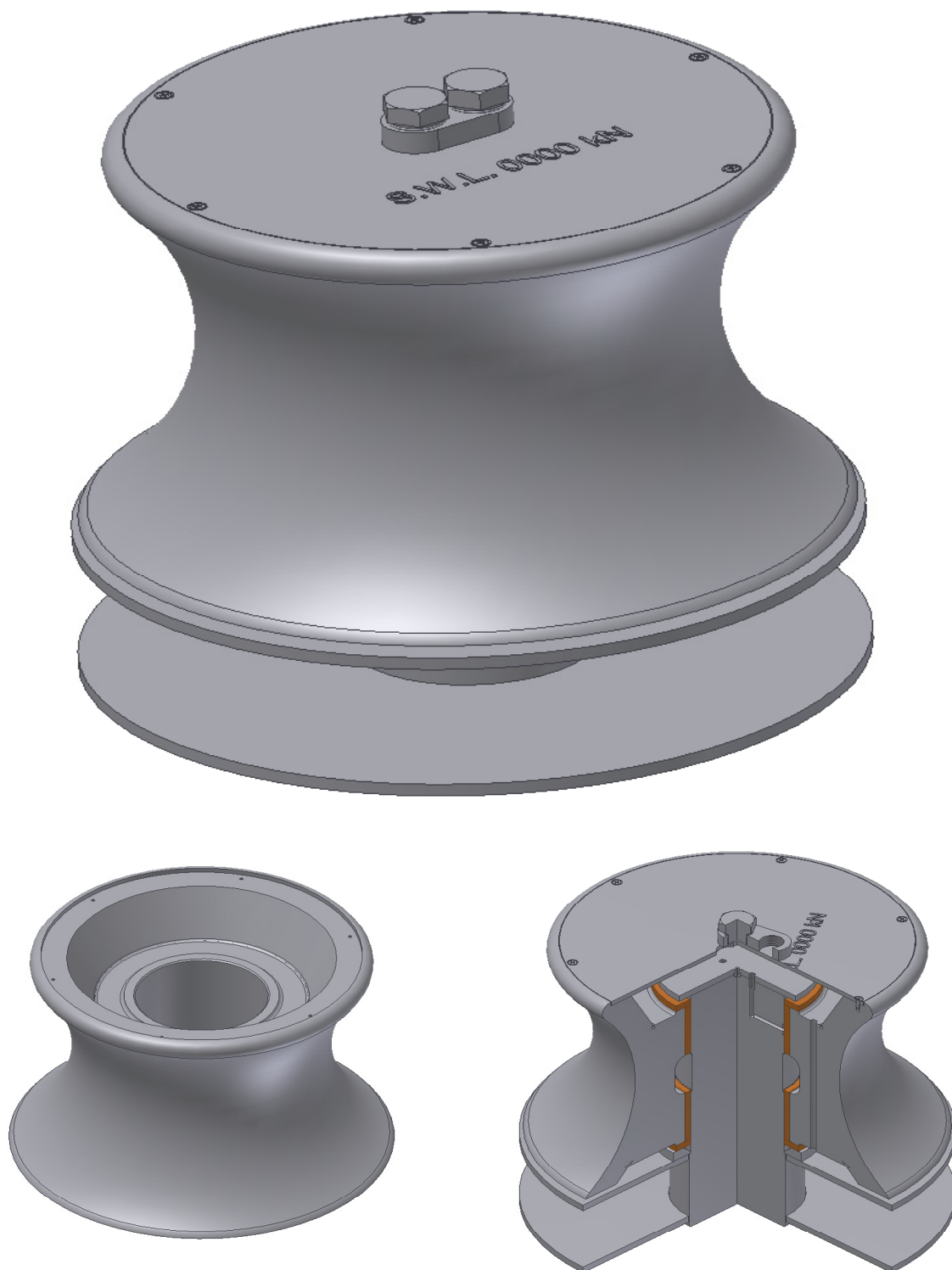


## TM 501005L TM Vertical Roller Fincantieri shape



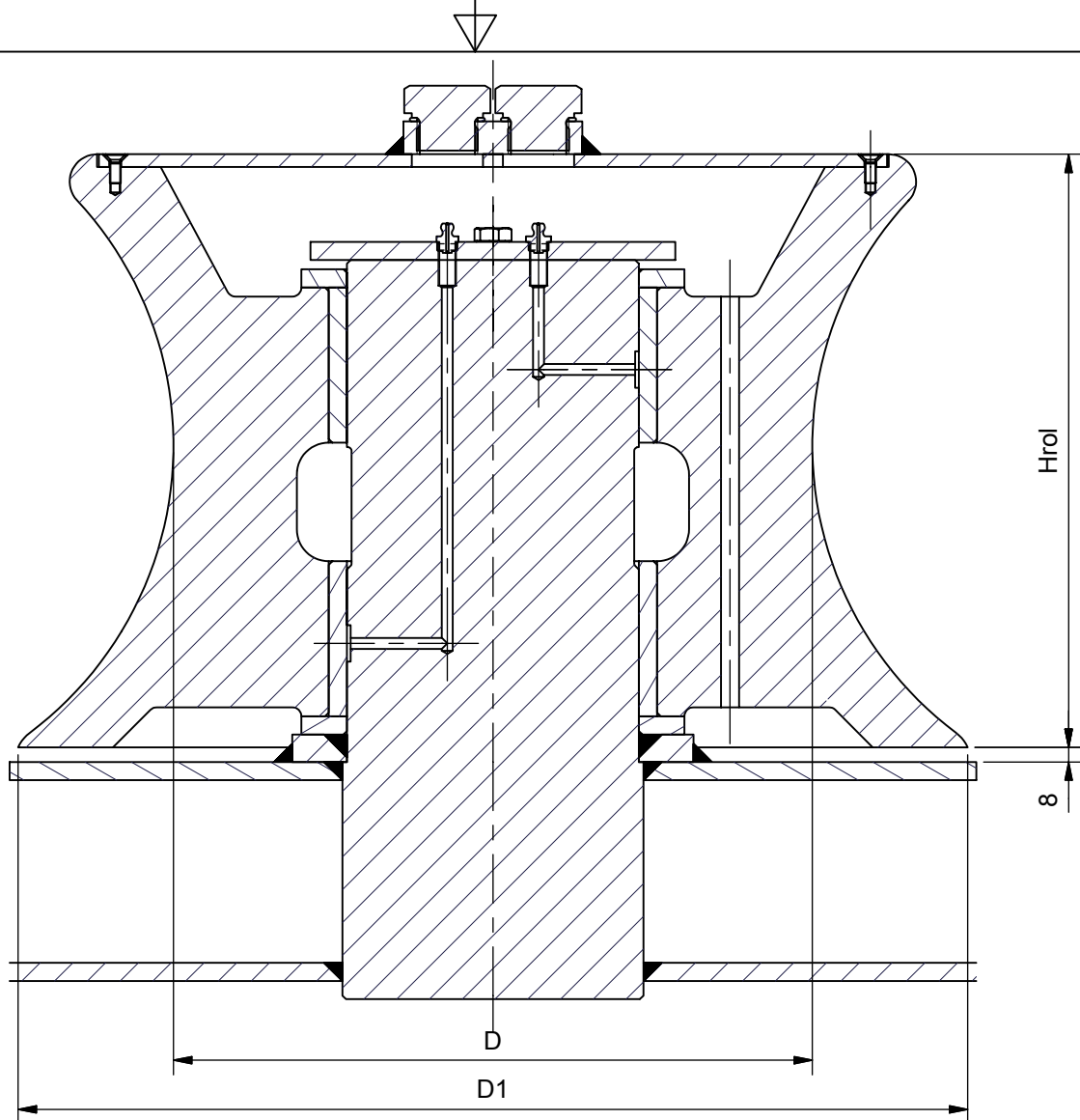
See reverse for details ⇒

**TECH-MARINE EQUIPMENT APS**

**ESRUMVEJ 421 • 3080 TIKØB • DENMARK**

E-mail: [Tech-Marine@Tech-Marine.dk](mailto:Tech-Marine@Tech-Marine.dk) • [www.Tech-Marine.dk](http://www.Tech-Marine.dk)

Phone +45 4970 4395 • Fax + 45 4970 1769 • CVR 25 99 96 49



**Material:**

Roller: Cast steel GS 240 acc. to EN 10293  
 Steel S275/S355 acc. to EN 10025

**Surface protection:**

All steel parts except bearing areas.

**External:** SA 2.5 + 25 micros of Hempel's shopprimer ZS 15890.

**Internal:** SA 2.5 + Two layers 125 micros (total 250 micros) Hempel Hempadur 45143 or equivalent.

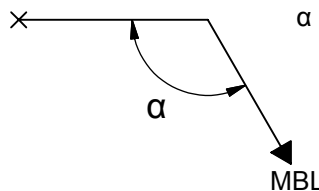
**Lubrication:** Grease type LT-4S (Gruppa Lotos)

The roller is in compliance with IMO guidance, NSC/Circ. 1175 of May 2005 and IACS UR A2 (rev.3)

Design load 1.25 x MBL.  
 Allowable stresses 100/60 % min yield point.  
 SWL = MBL

Upon installation the equipment should be test loaded to the specified SWL at the specified angle and a test certificate issued. The test certificate should be available for inspection on board ship

Suitable strengthening at deck/shell bulwark by the yard.



$\alpha$  - winding angle (minimum angle between towline 120°)

Vertical Roller				
DN	MBL (kN)	D imentions		
		D	D 1	Hrol
160	380	160	240	157
200	630	200	310	200
250	950	250	380	240
350	1350	350	520	325
450	1775	450	660	410

**STANDARD**

<b>Tech-Marine Equipment ApS</b> Esrumvej 421 - DK 3080 Tikøb Phone +45 4970 4395 Fax. +45 4970 1769	<b>TM 501005L</b>  TM Vertical Roller Fincantieri shape  Assembly	Date	Checked by	Revision:
		28-01-2011		C
		Sheet	2 of 2	

Existing law protects TMs rights of possession to this drawing. The design or the drawing must not, without permission of TM be published, copied, reproduced, manufactured or exploited in any other way.