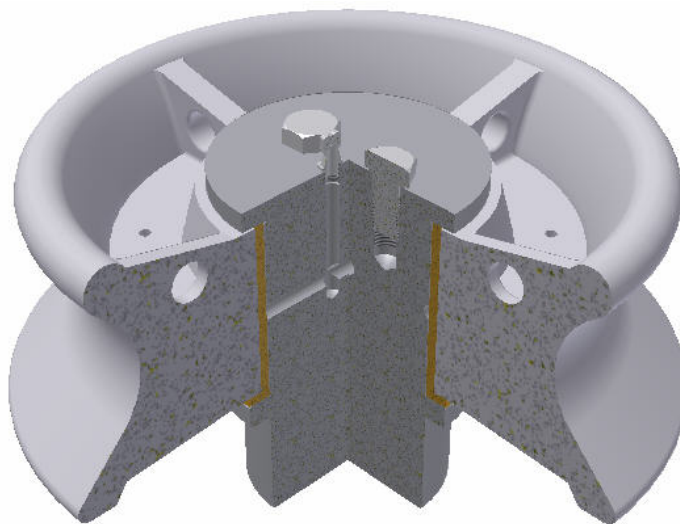
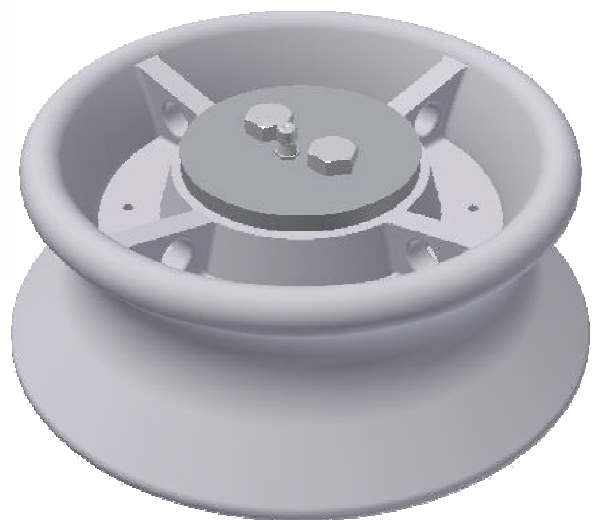


TM 501001L TM Vertical Roller DIN Shape



SECTION VIEW

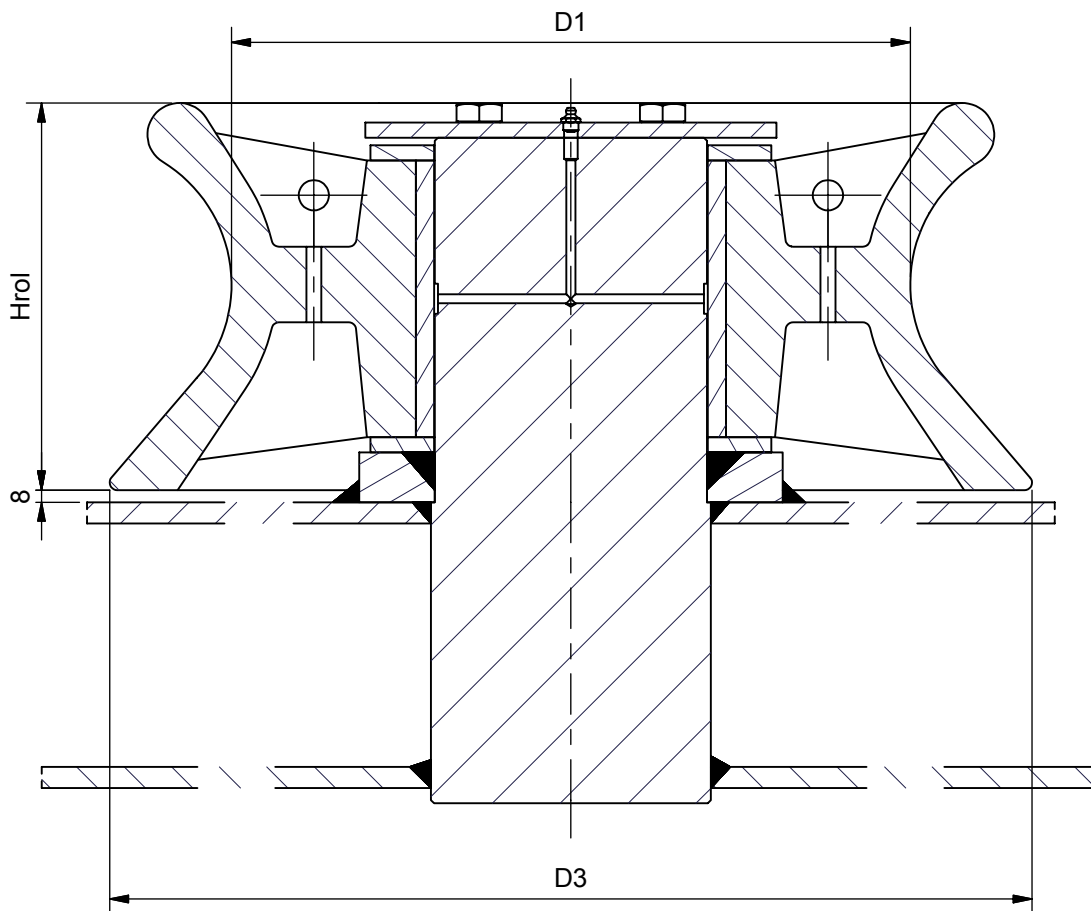
See reverse for details ⇒

TECH-MARINE EQUIPMENT APS

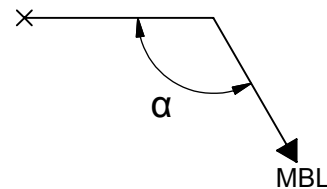
ESRUMVEJ 421 • 3080 TIKØB • DENMARK

E-mail: Tech-Marine@Tech-Marine.dk • www.Tech-Marine.dk

Phone +45 4970 4395 • Fax + 45 4970 1769 • CVR 25 99 96 49



α - winding angle (minimum angle between towline 120°)



Material:

Roller: Cast steel GS 240 acc. to EN 10293 or Grey Iron steel EN GJL-200
Steel S275J2/S355J2 acc. to EN 10025

Surface protection:

All steel parts except bearing areas.

External: SA 2.5 + 25 micros of Hempel's shopprimer ZS 15890.

Internal: SA 2.5 + Two layers 125 micros (total 250 micros) Hempel Hempadur 45143 or equivalent.

Lubrication: Grease type LT-4S (Gruppa Lotos)

The roller is in compliance with IMO guidance, NSC/Circ. 1175 of May 2005 and IACS UR A2 (rev.3)

Design load 1.25 x SWL.
Allowable stresses 100/60 % min yield point.

Upon installation the equipment should be test loaded to the specified SWL at the specified angle and a test certificate issued. The test certificate should be available for inspection on board ship

Suitable strengthening at deck/shell bulwark by the yard.

Vertical Roller - DIN shape					
DN	Type	SWL (kN) at winding angle 120°	Dimensions (mm)		
	acc. DIN		D1	D3	H rol
160	1	404	160	210	80
200	2	628	200	265	102
250	3	913	250	330	126
320	5	1525	320	420	160
400	8	1886	400	530	208
450	12	2084	450	610	256
500	20	2500	500	640	278
560	32	3200	560	780	348

STANDARD

Tech-Marine Equipment ApS Esrumvej 421 - DK 3080 Tikøb Phone. +45 4970 4395 Fax. +45 4970 1769	TM 501001L Vertical Roller - DIN shape Assembly	Date	Checked by	Revision:
		14-07-2014	ArK	D
		Sheet	2 of 2	

Existing law protects TMs rights of possession to this drawing. The design or the drawing must not, without permission of TM be published, copied, reproduced, manufactured or exploited in any other way.